



Flat (EPC Rating:)

PLOT 5 SEYMOUR AVE, LUTON,
BEDFORDSHIRE, LU1 3NR

Per month

£1,150 Per

McLains
— ESTATE AGENCY —



1 Bedroom Flat located in Luton

Welcome to this charming new build flat located on Seymour Avenue in Luton, Bedfordshire. This modern property, completed in 2025, offers a comfortable living space of 553 square feet, making it an ideal choice for individuals or couples seeking a contemporary home.

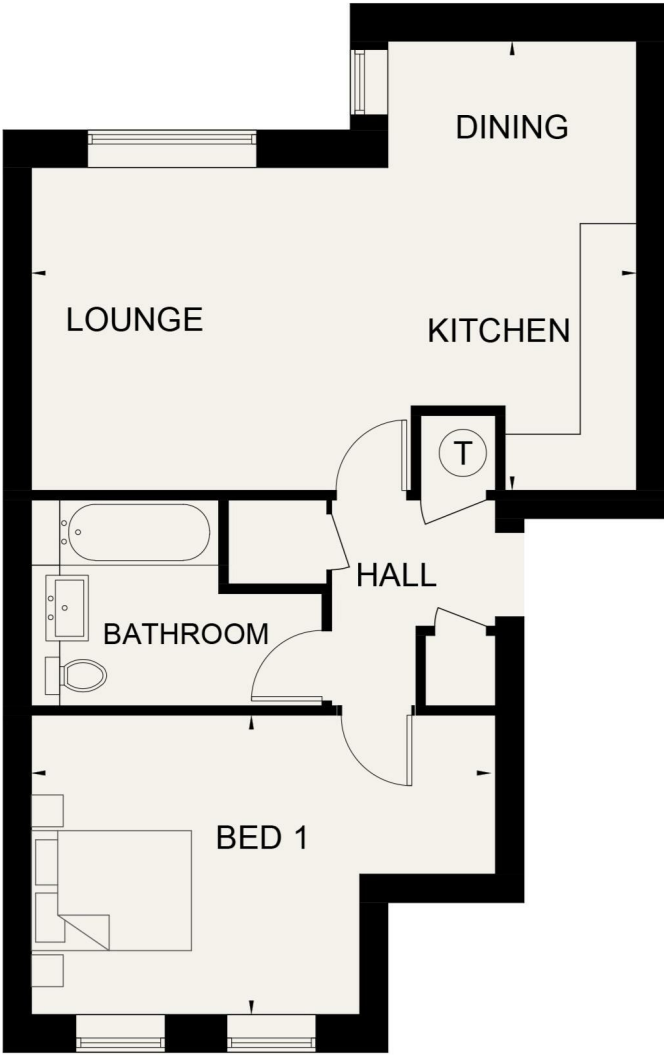
As you enter the flat, you will find a well-designed reception room that provides a warm and inviting atmosphere, perfect for relaxation or entertaining guests. The property features one spacious bedroom, which is designed to be a peaceful retreat, ensuring a restful night's sleep. The bathroom is thoughtfully appointed, offering both style and functionality.

One of the standout features of this property is its prime location. Just a mere five minutes from Luton Station, residents can enjoy swift access to London, with a direct train journey to Kings Cross taking only 24 minutes. This makes it an excellent choice for those who work in the capital but prefer the tranquillity of suburban living.

This flat is part of a new development, which means you will benefit from modern fixtures and fittings throughout, ensuring a hassle-free living experience. The location on Seymour Avenue is convenient, with easy access to local amenities, transport links, and green spaces, making it a desirable area to call home.



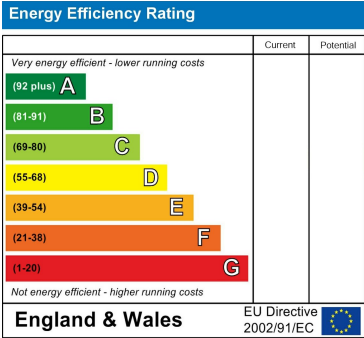
Approximate Gross Internal Area
51.4 sq m / 553 sq ft



First Floor

Council Tax Band
New Build

Energy Performance Graph



Call us on
01582 441225
info@mclains.co.uk
mclains.co.uk

Agents Note: Whilst every care has been taken to prepare these particulars, they are for guidance purposes only. All measurements are approximate and are for general guidance purposes only and whilst every care has been taken to ensure their accuracy, they should not be relied upon and potential buyers are advised to recheck the measurements.